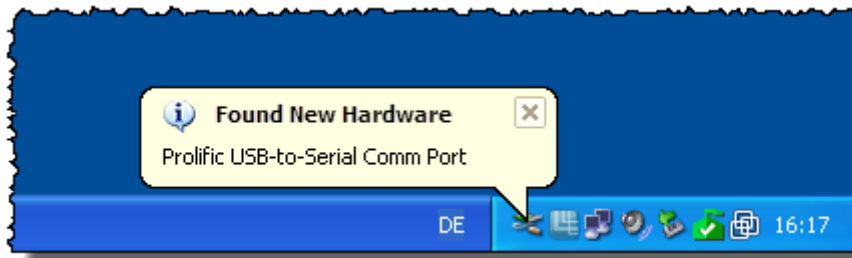


Setting up the USB serial adapter

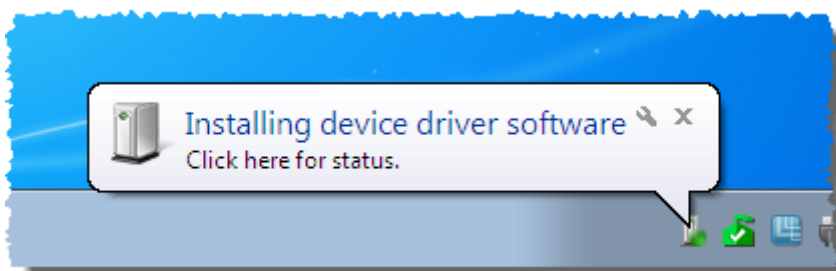
Then the provided USB-serial-adapter can be also connected to the computer. One should not use an USB hub or a USB port which is build into a card reader device.

Windows should report new hardware here, too:

Windows 2000/XP:

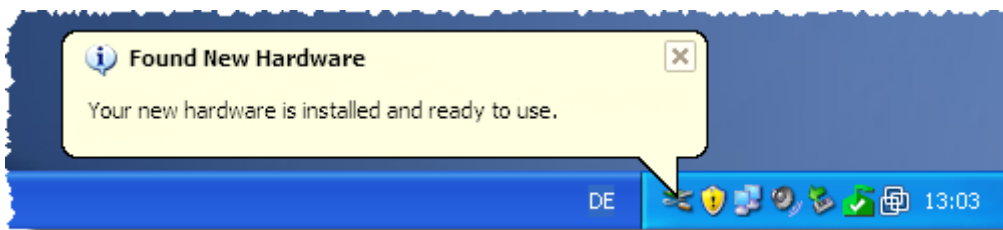


Windows Vista/7:

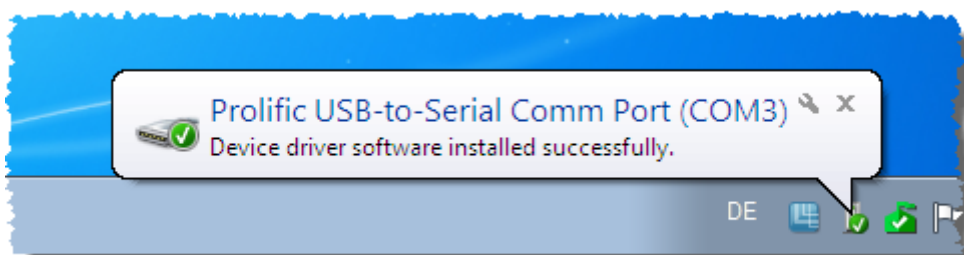


After a while the driver installation is finished:

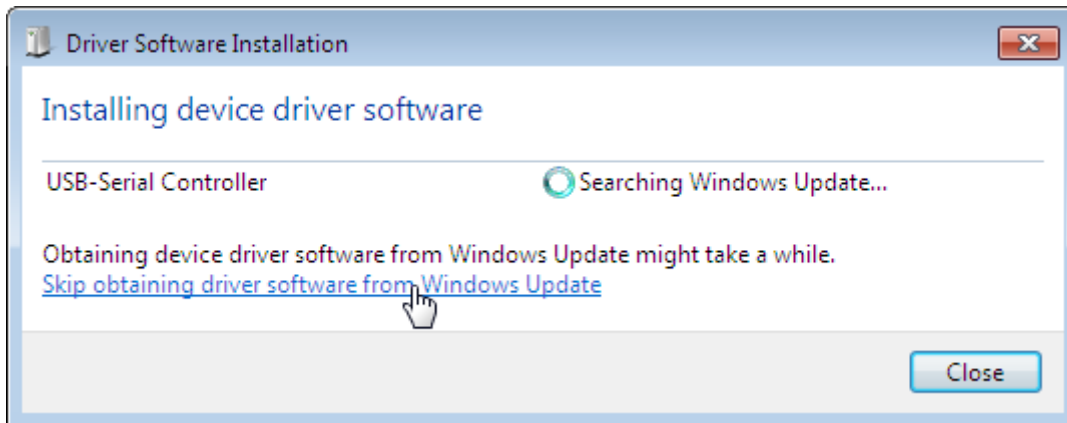
Windows 2000/XP:



Windows Vista/7:



With Windows Vista/7 you may also watch the progress of the installation by clicking on the status message popup:



It's advisable – as before – to skip the Windows update download process at this point (Windows Update currently doesn't provide any drivers for the device) and to accelerate the process that way:

