

## Setting up the TAP group

During installation a local group named "TAP" is created in order to grant user accounts with limited rights the opportunity to use the real-time priority the subtests are run with.

User accounts which exist locally are presented for selection during installation.

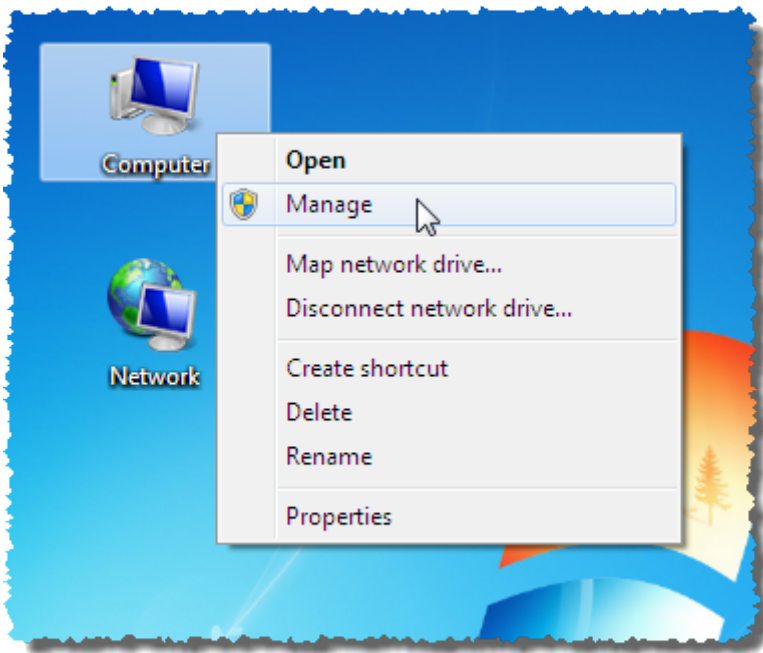
Network user accounts of a Windows domain don't appear in that way and in the absence of local accounts the dialog box is actually empty:



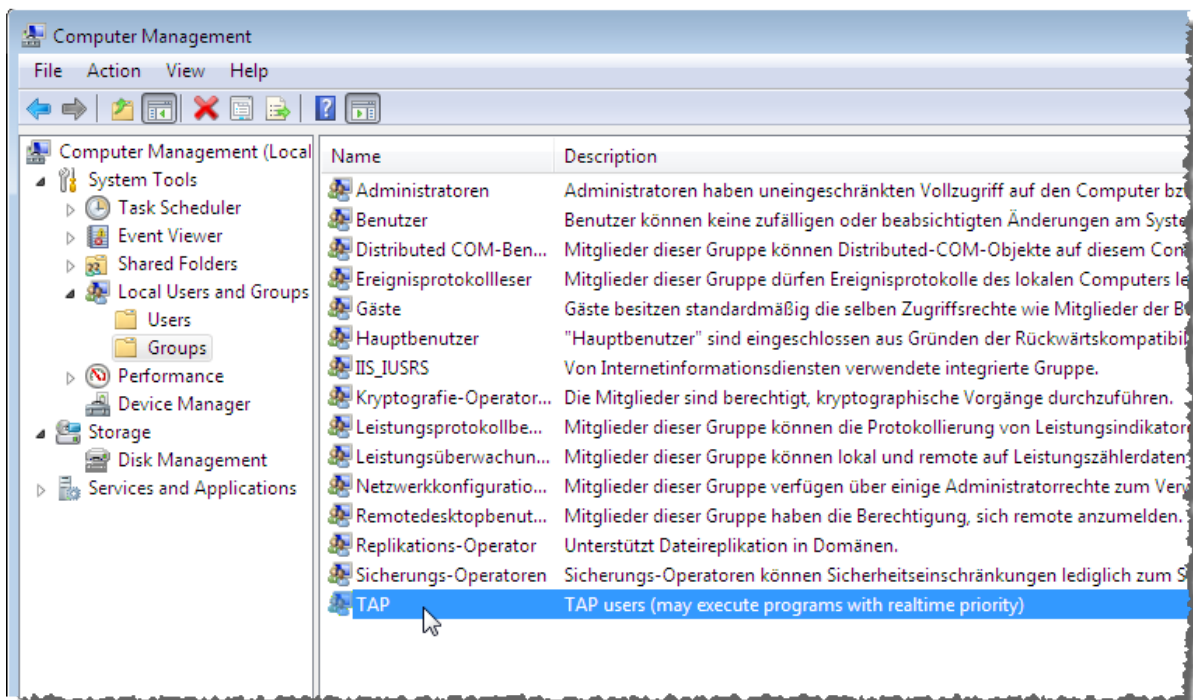
In any case this dialog should be confirmed with "OK" in order to create the TAP group.

Afterwards the user accounts can be added manually, which normally requires administrative privileges. That can be done via the computer management:

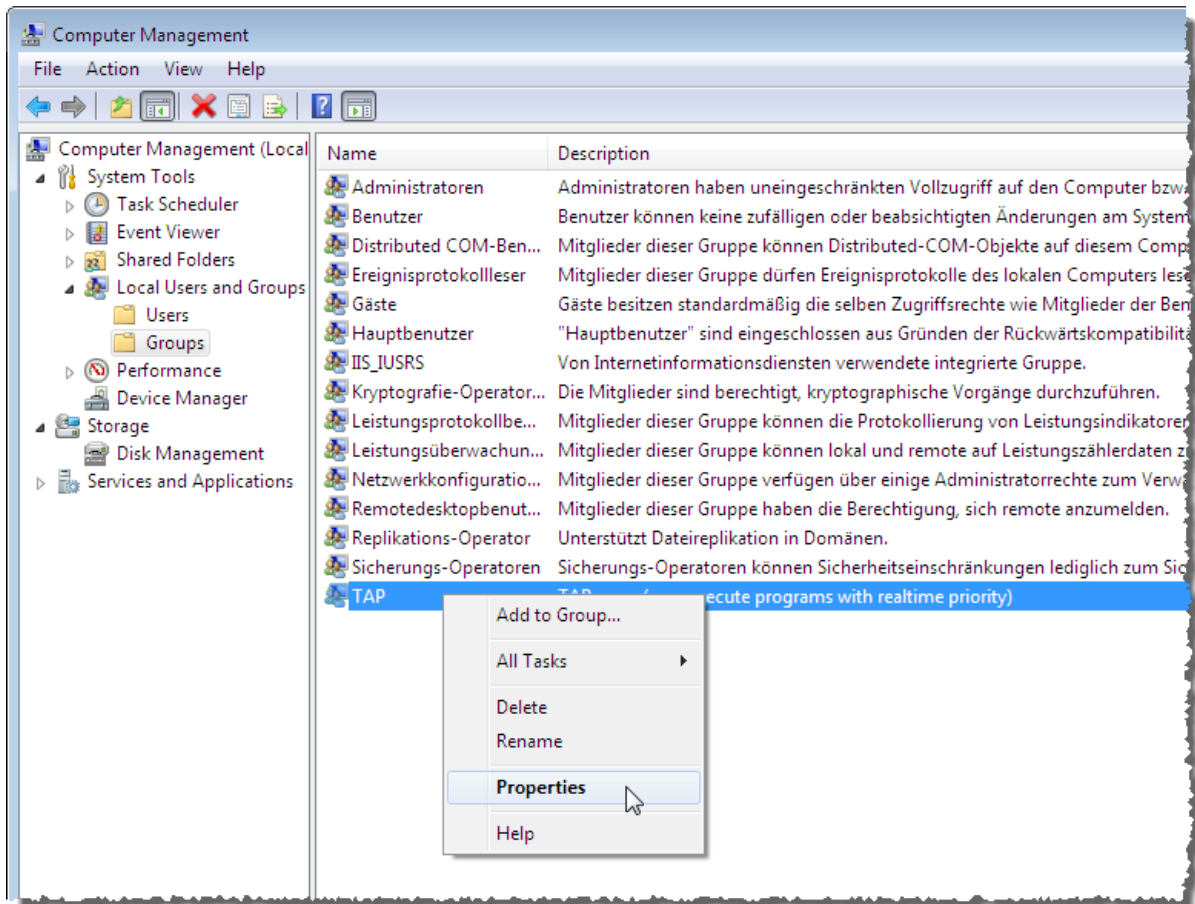
Right click the icon "My Computer" (Windows 2000/XP) or "Computer" (Windows Vista/7) and choose "Manage" from the context menu:



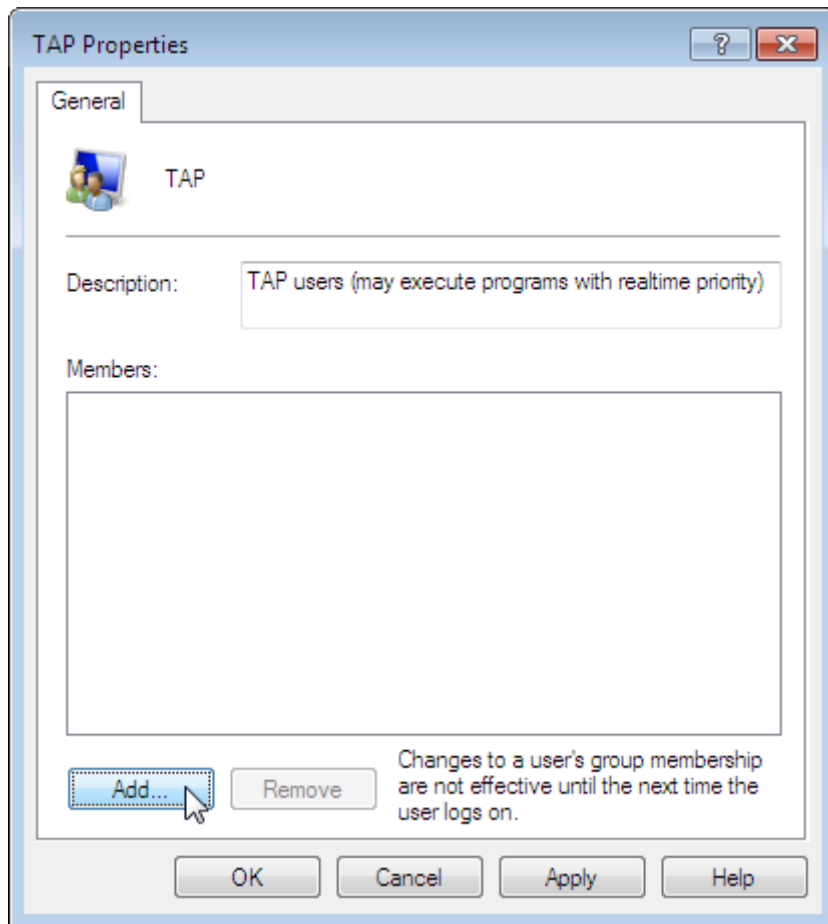
The window "Computer Management" will open:



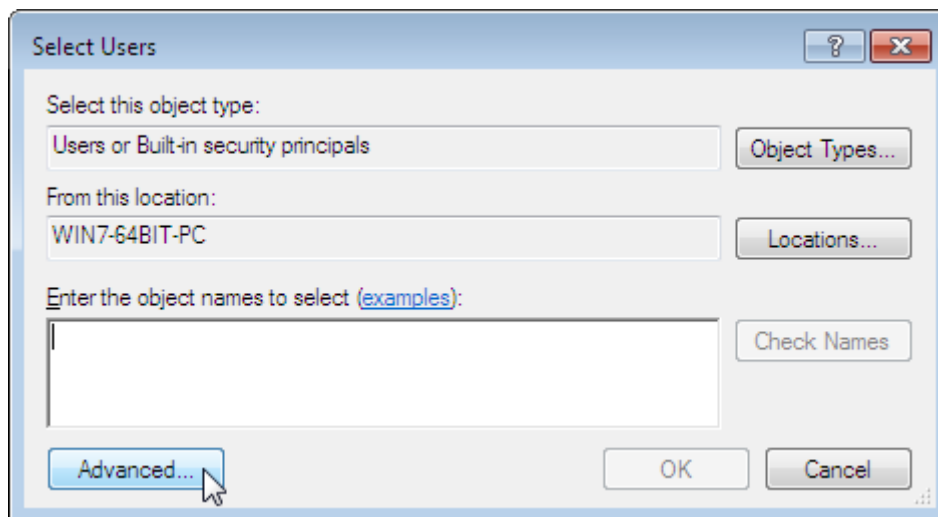
Expand the item "Local Users and Groups" on the left and mark the "Groups" entry in order to display the locally existing user groups – the TAP group should be one of them.  
A Right click on the TAP entry and choosing "Properties"...



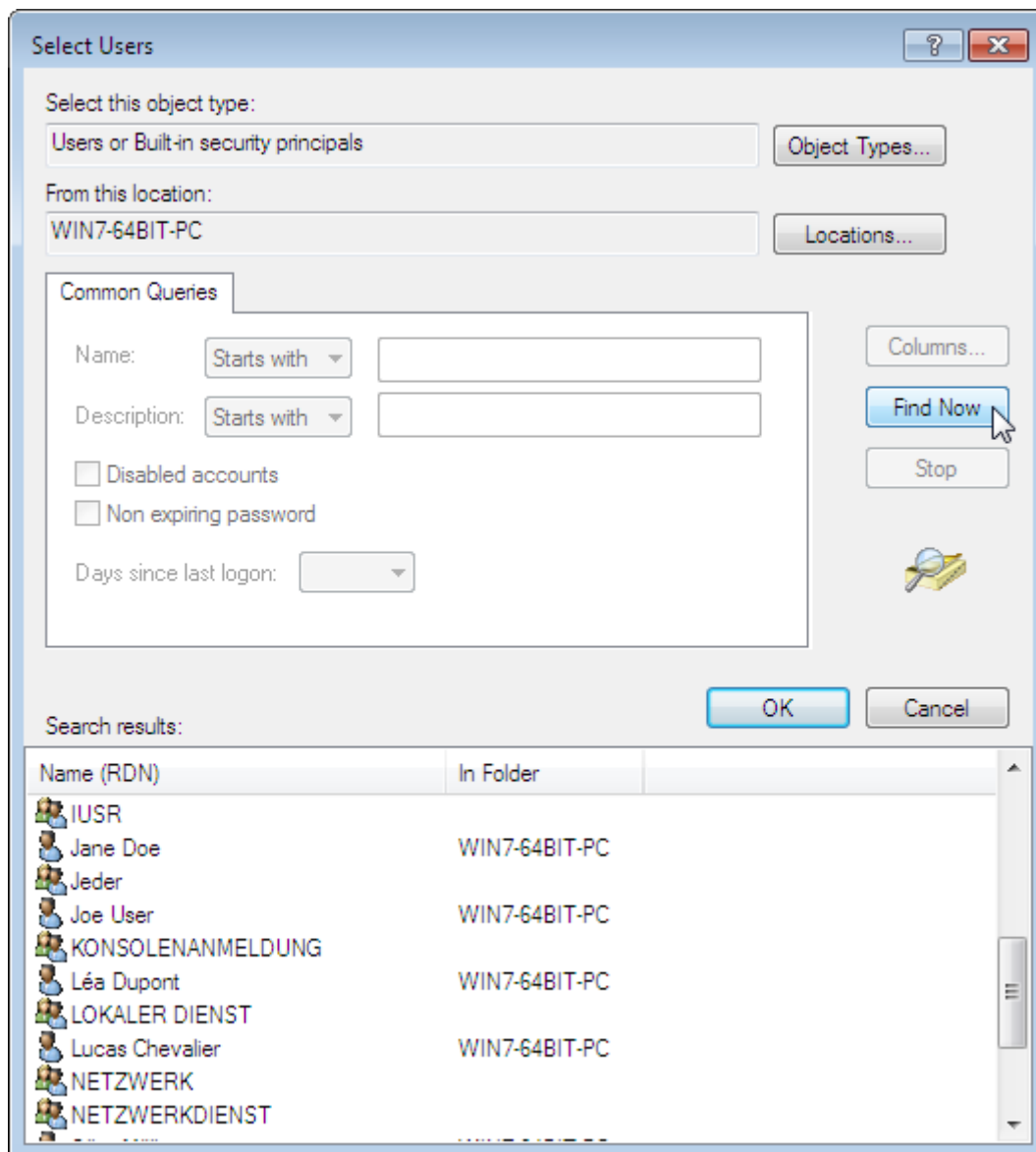
...opens the properties dialog of the TAP group:



After clicking "Add..."...

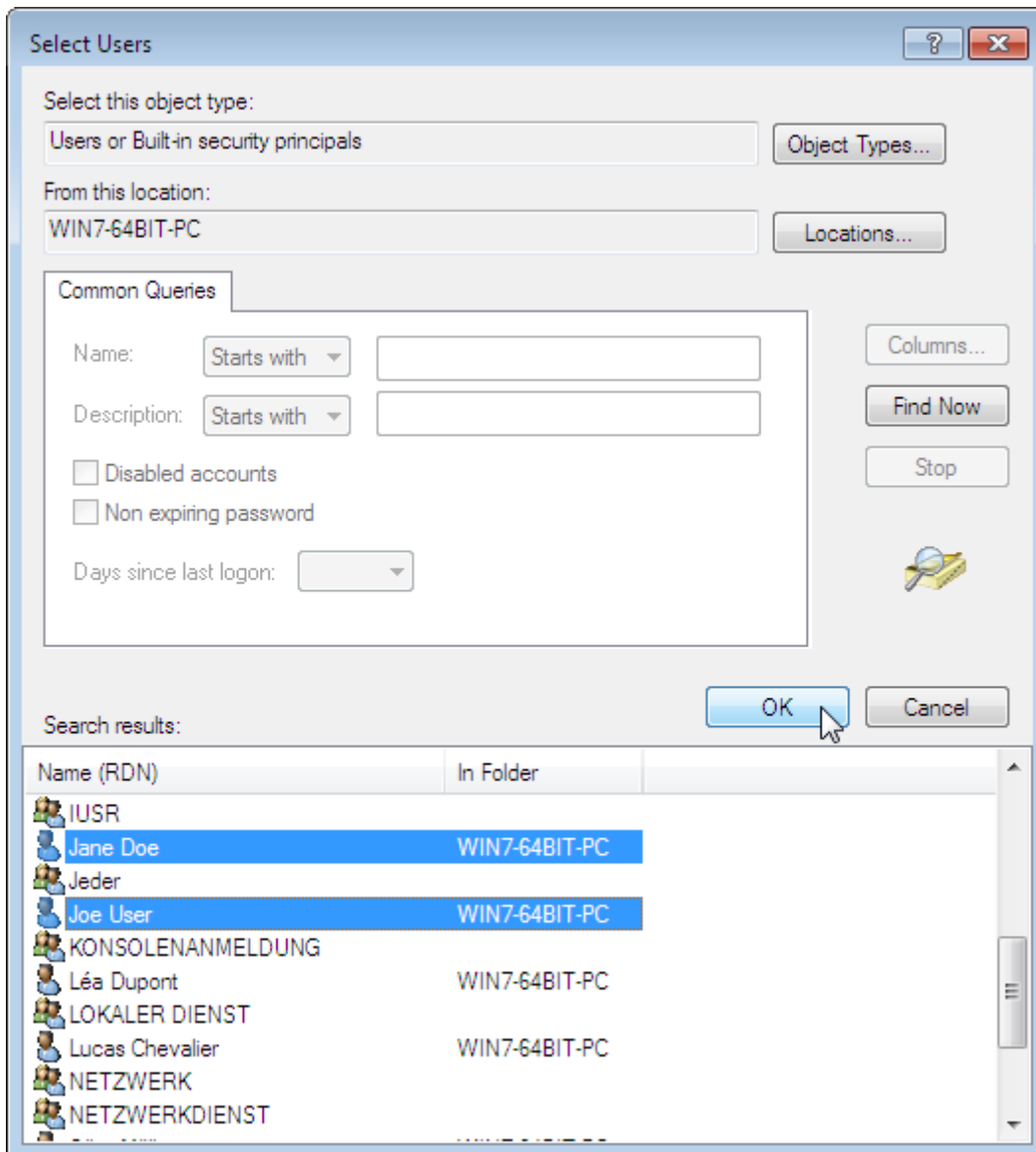


...user accounts can be added by manual input of their names. Alternatively you can choose "Advanced..." for an extended search:

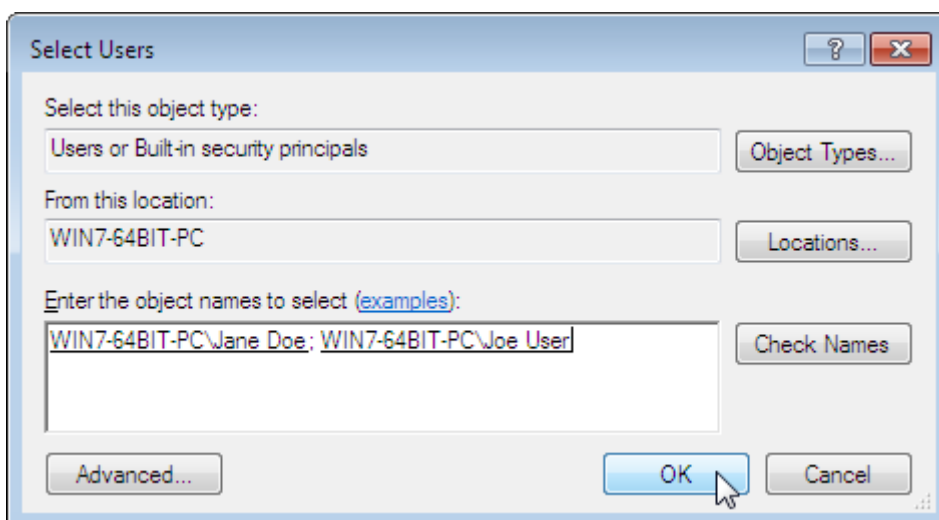


After an additional click on "Find Now" all available user accounts (both locally and network) are displayed.

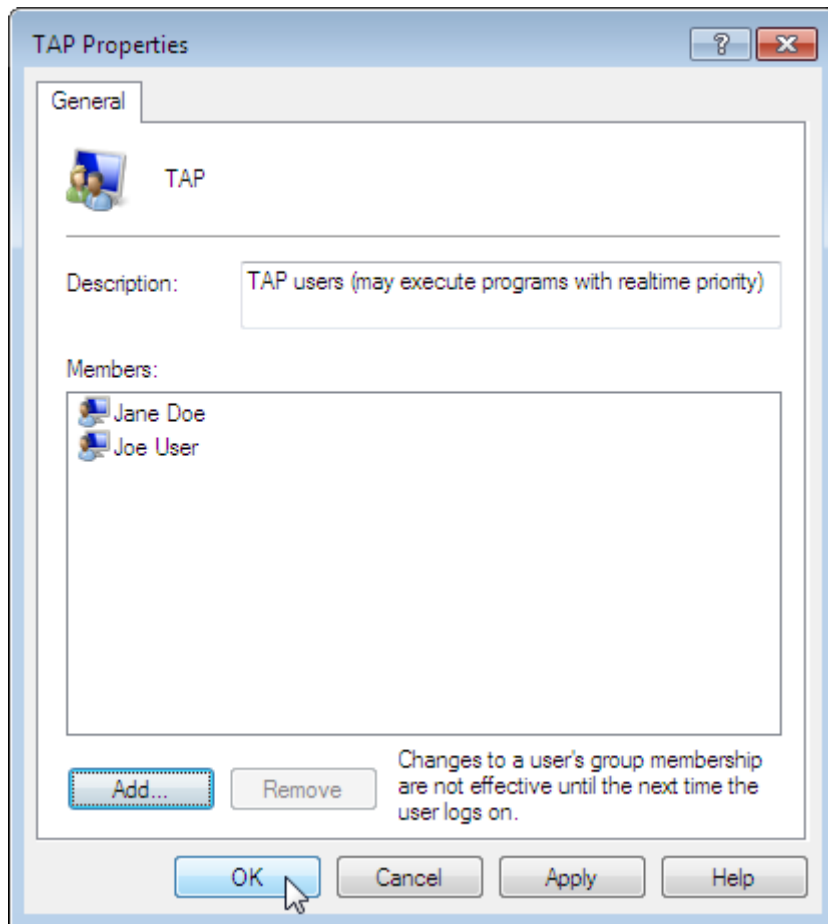
Now the desired accounts can be selected by a left click (hold down the CTRL key for a multiple selection):



After confirmation with "OK" the accounts will be taken over:



With a further "OK" these accounts will be added to the TAP group:



A final "OK" will finish the configuration.