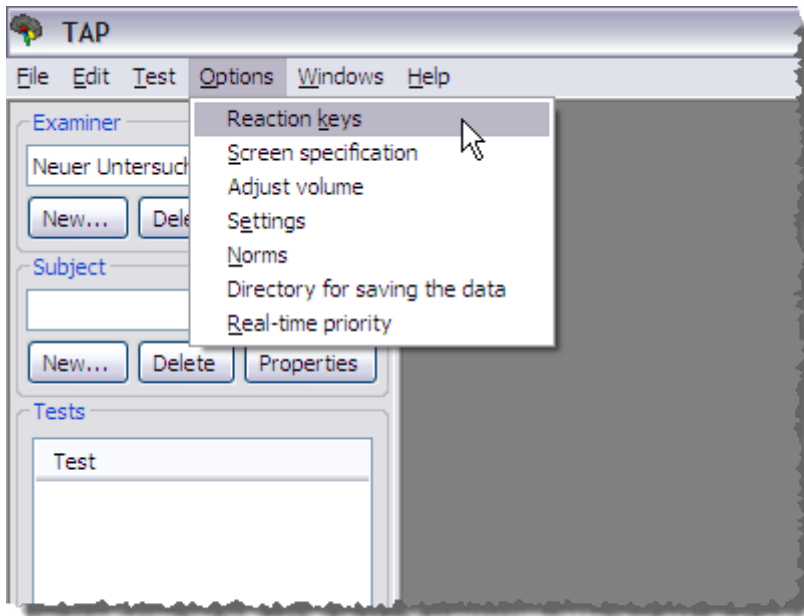


First Start

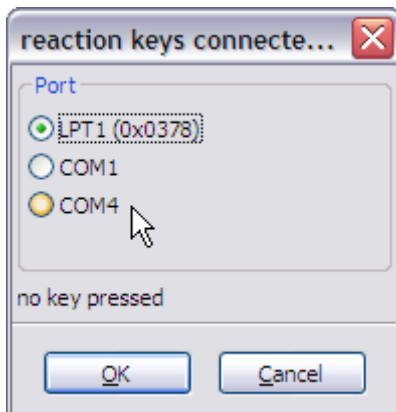
After setting up the USB dongle the TAP program can be started the first time. Afterwards the following settings/functions should be checked:

Operation of the reaction keys

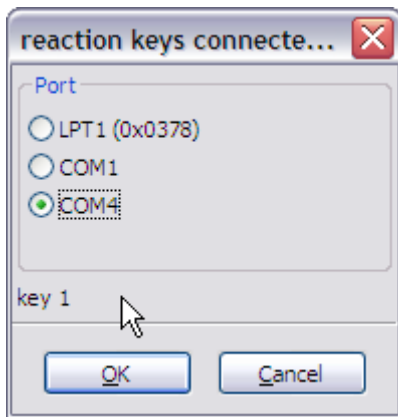
Therefore choose "Options>Reaction keys" from the menu:



The setting dialog will open:



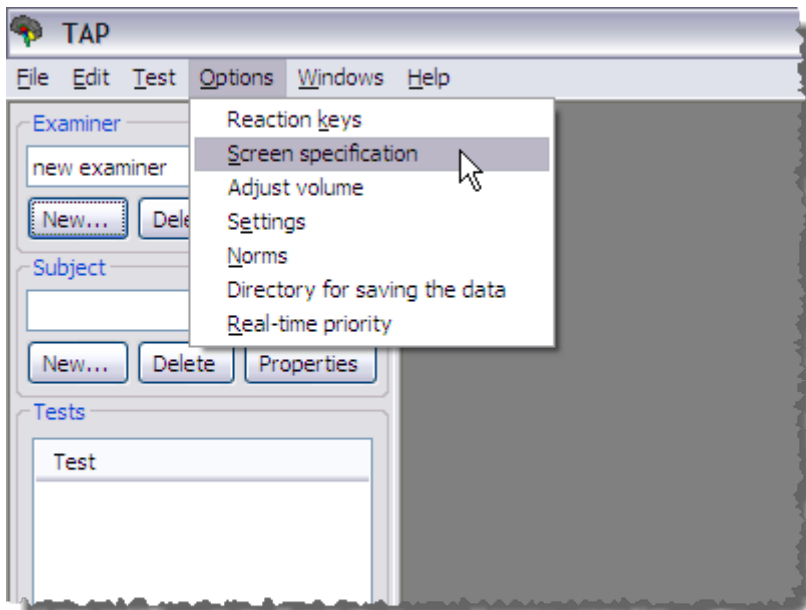
The number of listed ports may vary, but in most cases only one LPT or one Com-Port is shown. To test the reaction keys hold down one of them, then the displayed text should change from "no key pressed" to – e.g. – "key 1":



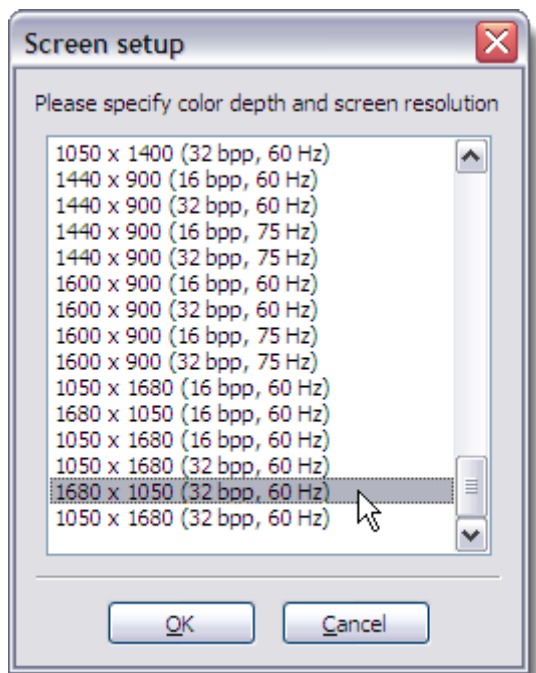
Adjustment of the screen resolution

To avoid a distorted presentation which that could affect the performance of the subject, you should set the so called "native resolution" of your monitor from within the TAP program. Information about the native resolution can either be found on the monitor itself or in its manual or on the homepage of the monitor manufacturer. Normally it is the highest value the TAP suggests in the screen-specification dialog.)

Choose "Options>Reaction keys" from the menu:



The setting dialog will open:



In this case the native resolution is 1680 x 1050 pixels.